



Cabinet Hardware



India International House Ltd.

ADDRESS B-1 MMTC / STC Colony, LSC Navjivan Vihar, NEW DELHI -
110017 (INDIA)

PHONE NO. +91 11 43575156 , 26691550

MOBILE NO. +91 9810517711, 9811036192, 9810021354

EMAIL abg@skggroup.com, skg@skggroup.com, kulin@skggroup.com

WEBSITE www.builderhardware.com

Knob



Avallon Knob

Weight: 0.252gm

Material: Brass

Finish: Polished Nickle

AK-12



Laurel Knob

Weight: 0.346gm

Material: Brass

Finish: Polished Nickle

LK-13



Maltesia Knob

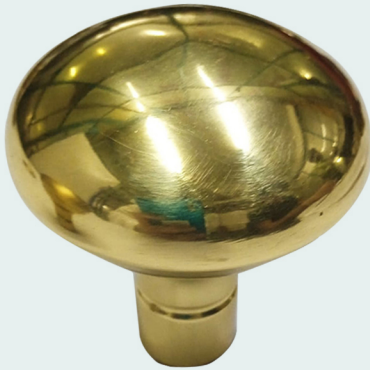
Weight: 0.250gm

Material: Brass

Finish: Antique Brass

MK-14

Knob



Netropol Knob

Weight: 0.175/ 0.190gm

Material: Brass

Finish: Antique Brass/ Polished Brass (PB)

NK-12



Charleston Knob

Weight: 0.200gm

Material: Brass

Finish: Oil Rubbed Bronze

CK-13



Oxford Knob

Weight: 0.236gm

Material: Brass

Finish: Unlacquered

OK-17

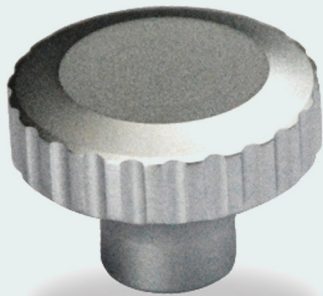
Knob



Egg & Dart Knob

Weight: 0.200gm
Dimension: 8"
Material: Brass
Finish: Unlacquered/ Polished
Nickle

ED-14



Knurled Knob

Dimension: 38mm
Weight: 0.200gm
Material: Brass

CN-01



Classic Round Cabinet Knob

Dimension: 25mm
Weight: 0.033gm
Material: Brass

CN-03

Cabinet Pull



Cabinet Pul

Dimension: 50x38mm

Weight: 0.059gm

Material: Brass

CP-01



Cabinet Pull

Dimension: 89x45mm

Weight: 0.125gm

Material: Brass

CP-02



Cabinet Pull

Dimension: 1.75 x 1.25 x 1"

Weight: 0.051gm

Material: Brass

CP-03

Cabinet Pull



Cabinet Pull

Dimension: 45mm

Weight: 0.024gm

Material: Brass

CP-04



Pull Handle

Dimension: 6"

Weight: 0.280gm

Material: Brass

CP-08



Cabinet Pull



Deco Pull

Dimension: 6"

Weight: 0.326gm

Material: Brass

Finsh: Unlacquered

DP-09



Deco Pull

Dimension: 6"

Weight: 0.628gm

Material: Brass

Finsh: Polished Nickle

DP-10



Cabinet Pull



Dimension: 4"

Weight: 0.068gm

Material: Black Iron

CP-11



Dimension: 6"

Weight: 0.043gm

Material: Black Iron

CP-10





India International House Ltd.